

13.3 inch
Fully Rugged Notebook

Enjoy the possibilities On the go



- Windows
- IP65
- GPS
- Camera
- Dual-battery
- Fingerprint
- Thunderbolt 4
- 4G
- WIFI
- Bluetooth

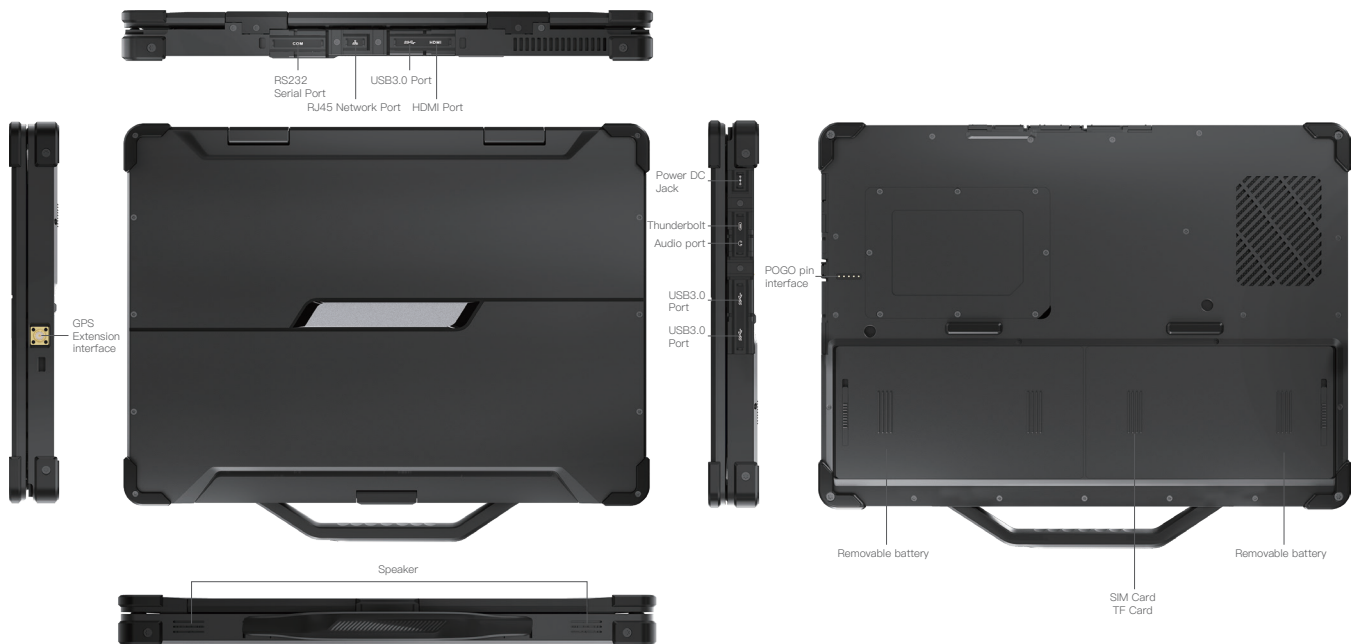
Performance

- 11th Gen® Intel® Core™ i5/i7 processor
- New Intel Iris® Xe core graphics card
- Support Windows 10/Windows 11 OS

Communication

- High speed Wi-Fi 6
- Bluetooth 5.1 for higher transfer speeds
- 4G mobile network for reliable communication

Product Six Views



Function

- Connect more devices with Thunderbolt 4
- Rich interfaces can meet various needs
- 2x2800mAh hot-swappable battery for 10 hours standby, support PD fast charge

Reliability

- Enhanced high-strength body
- IP65 high protection level
- In accordance with MIL-STD-810G

* All technical data, specification and performance figures subject to change without notice.

Specification Parameter

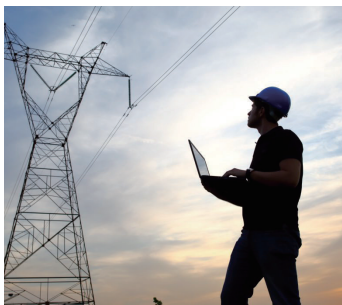
Basic parameters	
Dimension	322 x 233 x 26mm
Weight	2.1Kg
Device Color	black
LCD	13.3inch FHD 16:9, 1920*1080
Touch Panel	Optional 10points Capacitive, G+G, Corning Gorilla Glass
Camera	Front 2.0MP
I/O	HDMI x 1, POGO 5pin x 1(Optional, Batch restructuring), Type C x 1, USB 3.0 x 3, SIM Card x 1, TF Card x 1, DB9 RS232 x 1, RJ45 x 1, Φ3.5mm standard earphone jack x 1, DC 19V 3.42A x 1
Power	AC100V ~ 240V, output DC 19V/3.42A/65W
GPS	Optional GPS (Only batch adjustment is supported)
Battery (Pluggable)	
Capacity	11.1V/2800mAh x 2
Type	Li_polyment, removeable battery
Endurance	10hrs (Default 50% volume, default 200 nit, Play 720P HD video)

Performance parameter	
CPU	Intel® i5-1135G7/i7-1165G7
OS	Windows 10/11
RAM	8GB/16GB
ROM	256GB
Network connections	
WIFI	WiFi 6, 802.11a,b,d,e,g,h,i,k,n,r,u,v,w,ac,ax
Bluetooth	BT5.1
4G (Optional)	LTE FDD: B1/B3/B7/B8/B20/B28A WCDMA: B1/B8 GSM: B3/B8
Reliability	
Operate Temperature	-20 °C ~ 60 °C
Store Temperature	-30 °C ~ 70 °C
Humidity	95% Non-Condensing
IP Grade	IP65
Optional modules	
Fingerprint	SPI fingerprint (power on login)

***4G (LTE) is available in optional equipment. Requires IMEI registration depending on country. IMEI registration is not included in the price of the given product. In cases where 4G registration is not requested at the time of order, it is not legally possible to register IMEI after delivery.

Application Range

Various modules and accessories can be selected to meet customers' application in various industries.



Power Maintenance



Equipment Testing



Automobile Manufacturing



Public Security