

ICC Dijital Endüstriyel Teknolojiler Ltd. Şti.



Ürün Gami

- Endüstriyel Panel PC
- Endüstriyel Box PC
- Endüstriyel Anakart (Mainboard)
- IoT Gateway (Wifi, 3G/LTE, Lora vb.)
- IoT Boards (UP-Board)
- EN505155 Raylı Sistem Bilgisayarları
- E-Mark Araç Bilgisayarları
- Otomasyon Scada Yazılımı
- Enerji Yönetim ve İzleme Yazılımı
- OEE-KPI Raporlama Yazılımı
- Digital Signage Players
- Networks Appliances

ICC Dijital Endüstriyel Teknolojiler Ltd. Şti.



AAEON[®]
an **ASUS** company



iBASE



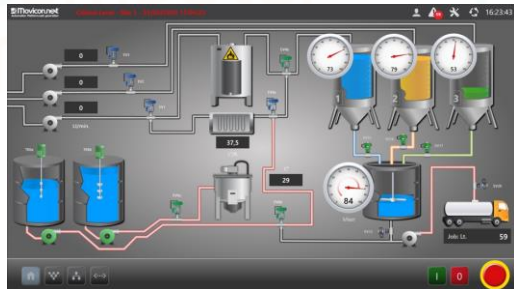
Mixer
63,3 %
98 °C
58 Sec.
MAN AUT
PID REG
49
49
657
36
12:09:59

INDUSTRIAL AUTOMATION SOFTWARE
progea

Movicon 11.5 **Movicon.next**
MONITORING VISION AND CONTROL Automation Platform.next generation

Movicon Pro.Energy **Movicon Pro.Lean**

Connex OPC UA Server & Historian **OPC UA**



ASUS[®]

ASUSTeK Computer Inc.



Taipei HQ

Kuruluş	: April 1, 1989
Sermaye	: 2017 USD\$247.6M)
Çalışan	: 6,258
Yer	: TW, China, Global
Yıllık Gelir	: 2017 USD\$14.5bn
Ürünler	: Motherboard, Notebook vs..

A4EON[®]
(Industrial & Embedded
Computing platforms)

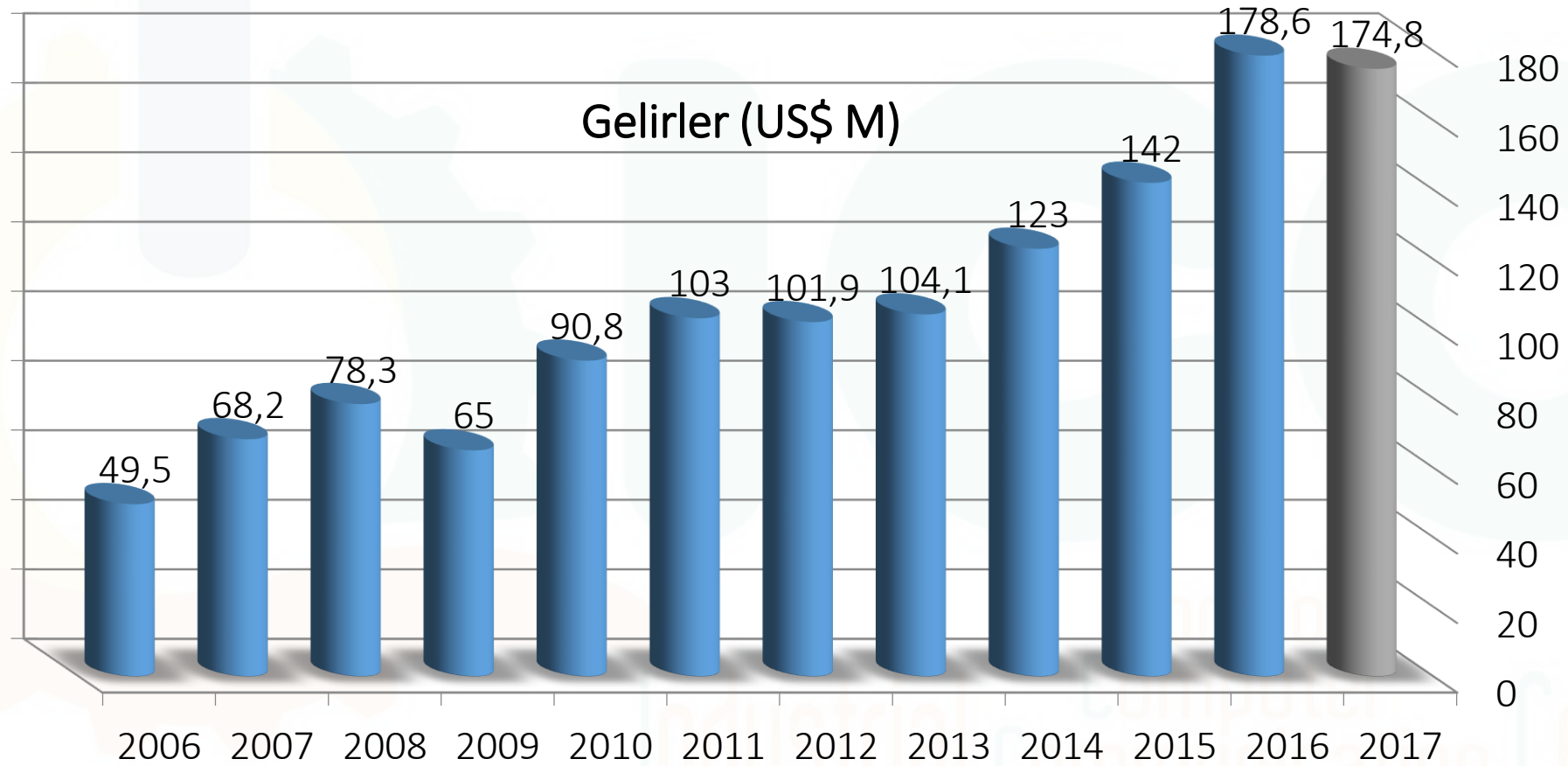
ASUS[®]



Temsilcilikler



Kuruluş : 1992
Asus'a katılım : 2011
Sermaye : 35M\$
Çalışan Sayısı : 850+
Yer : Taipei, Taiwan





Ana Çalışma Alanı

Dayanıklı endüstriyel bilgisayar platformları tasarım ve üretimi

Merkez

Taipei, Taiwan

Üretim Alanları

Sanchung & Hsinchuang,
New Taipei City, Taiwan

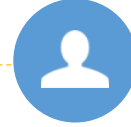
Borsa Kote Kodu

TPEX 8050 (Since 2003)



KURULUŞ

Şubat
2000



KURUCU /CEO

C.S. Lin



SERMAYE

US\$41.7M



ÇALIŞAN SAYISI

670
(Group/Worldwide)
480
(IBASE HQ)

DÜNYADAKİ OFİSLER



USA
Sunnyvale



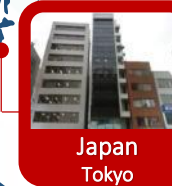
UK
Herts



Italy
Domodossola



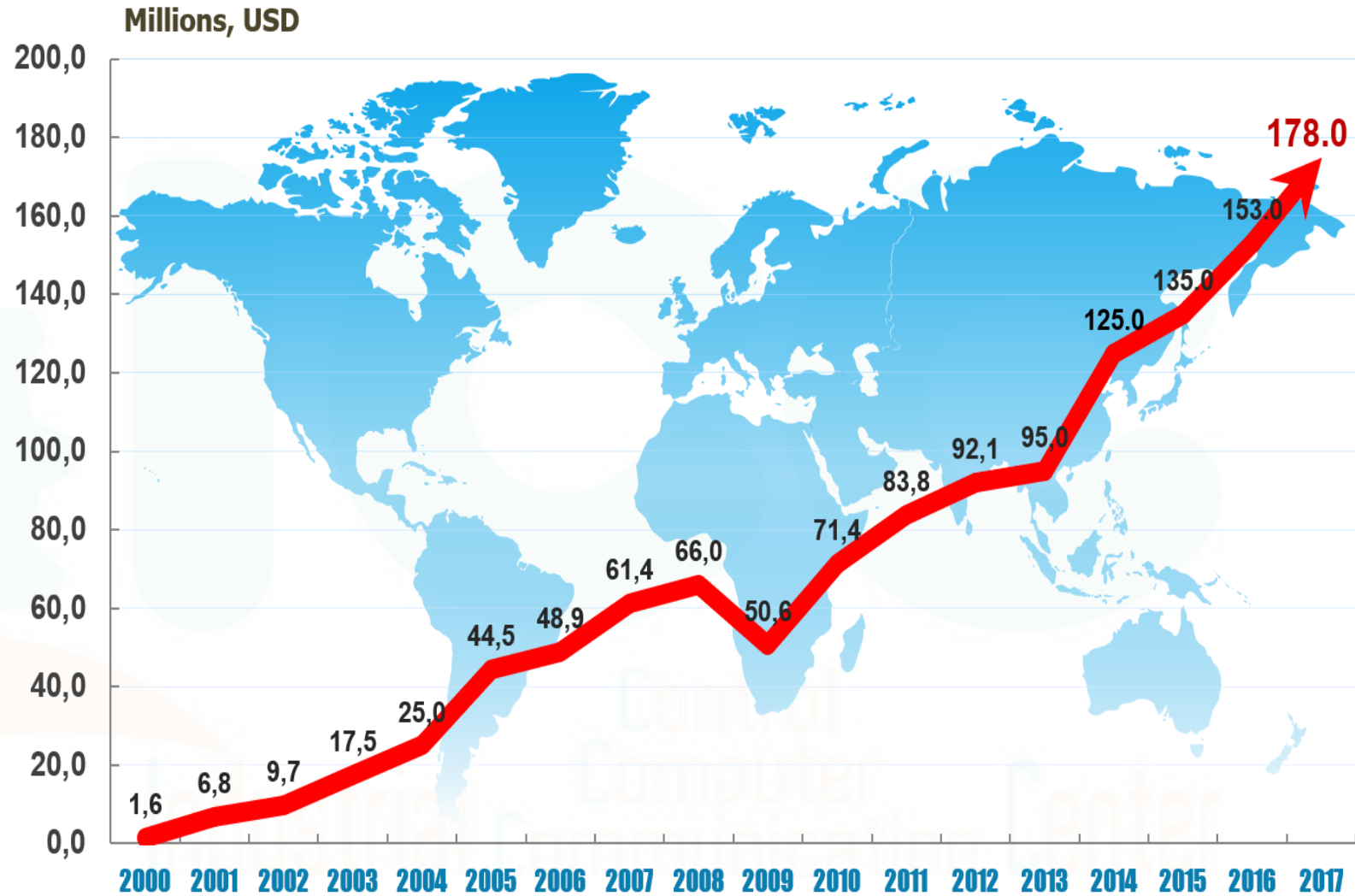
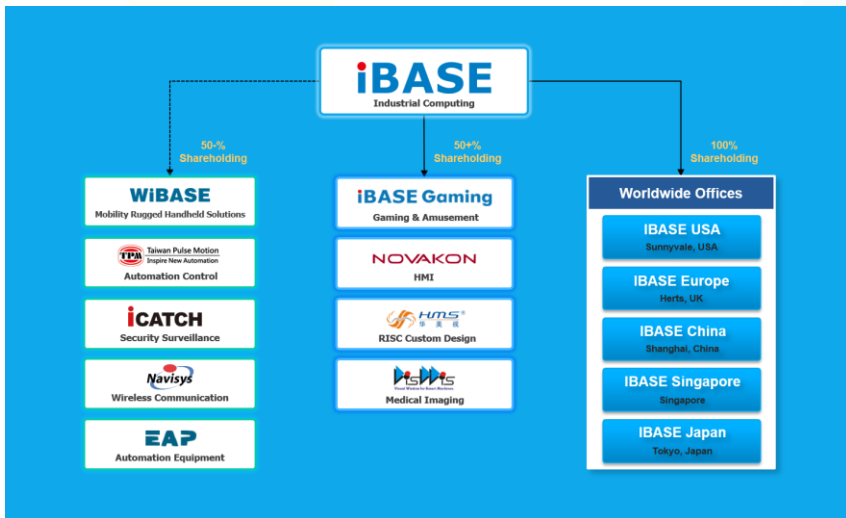
China
Shanghai



Japan
Tokyo



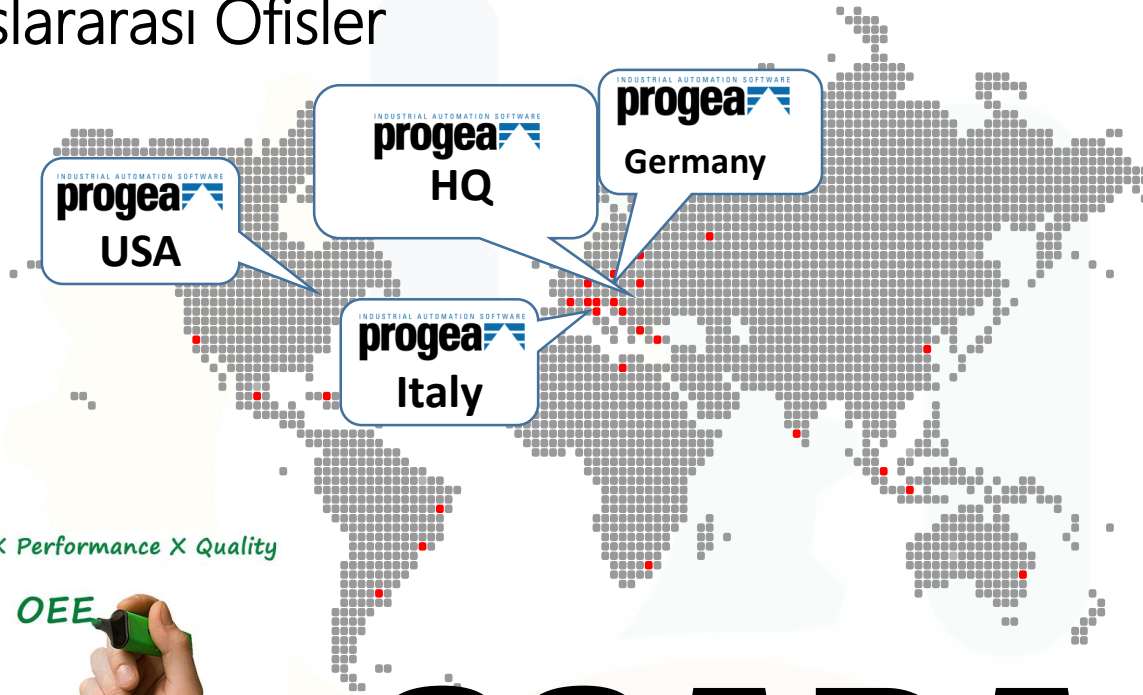
Singapore



Temsilcilikler



Uluslararası Ofisler



Availability X Performance X Quality

= OEE



SCADA



Temsilcilikler

Otomasyon Yazılımı için son teknolojiye araştırma ve geliştirme
Windows tabanlı Scada'nın ilk üreticileri arasında (Win3.11)
Win64'den Windows CE'ye kadar sunucularda ölçeklenebilirlik sunan ilkler arasında
Web tabanlı HMI teknolojilerini destekleyen ilkler arasında
XML teknolojilerine dayalı mimarlık sunan ilkler arasında
OPC UA teknolojisinin ana destekçileri arasında
WPF / XAML tabanlı bir Scada / HMI platformunu tanıtan ilkler arasında
Artırılmış gerçekliği denetlemeye uygulayan ilk öncüler arasında
Win10 IoT üzerinde çalışan HMI uygulamalarının ilk öncüleri arasında



Movicon 11.5
MONITORING VISION AND CONTROL

Movicon.next
Automation Platform.next generation

Movicon 
Pro.Energy

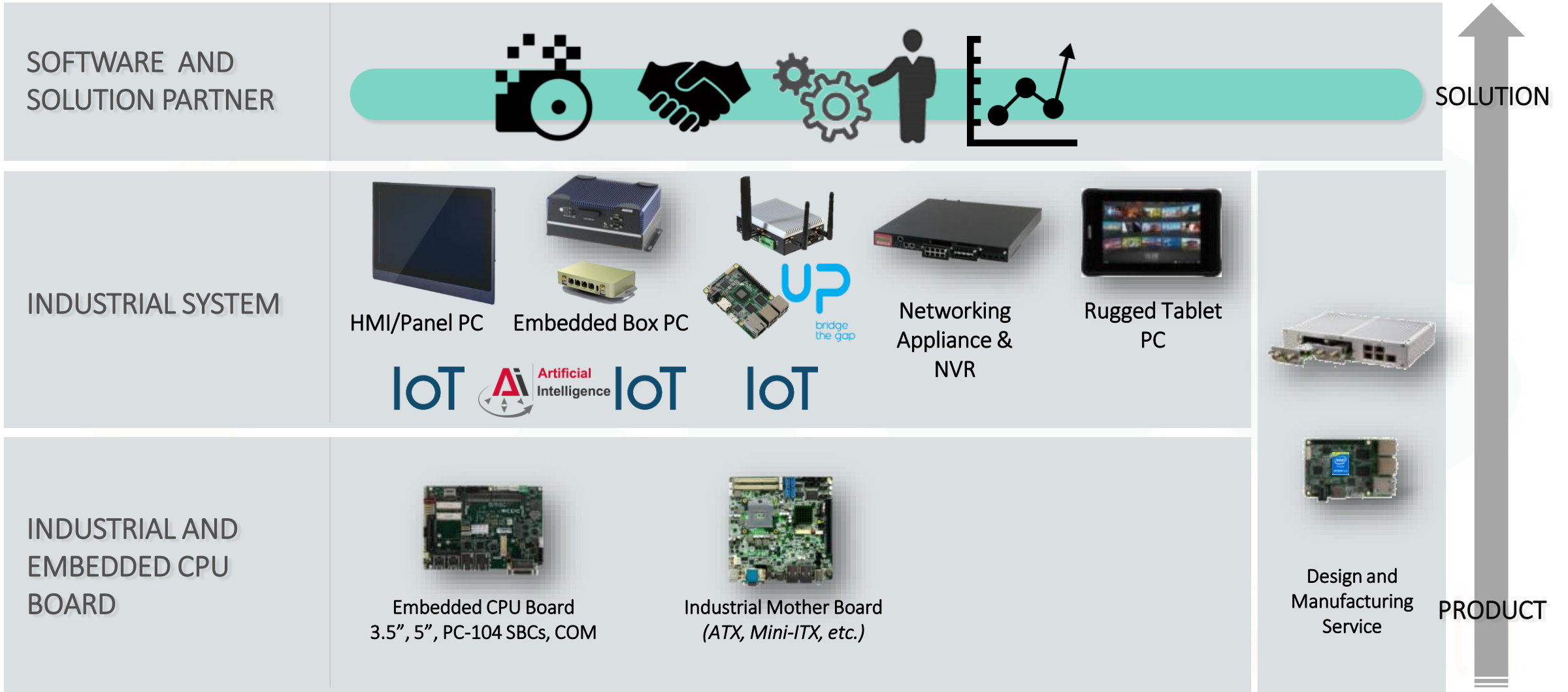
Movicon 
Pro.Lean

Connex
OPC UA Server & Historian

OPC UA



AAEON by ASUS Çözümleri - Genel



Vertical Focus & Applications



Smart Retail

- POS & Mobile POS
- Fitness Terminal
- Smart Vending
- Digital Signage & KIOSK
- Unmanned Stores



Smart Manufacturing

- Robot
- Machine Vision
- Quality prediction
- Logistics & Warehousing



Intelligent Transportation

- Gate control
- In-vehicle Signage & Security
- Ticketing Machine
- Smart Street Light
- Smart Parking



Network Security

- NGFW / UTM
- SDN/NFV/vCPE
- VPN/VM
- Network Appliance
- Video Surveillance

IoT Platform + Solution



Embedded Computing

- Embedded System
- Industrial Motherboard
- Single Board Computer
- CPU Module
- CPU Card
- [EtherCAT Solution](#)



Industrial Panel PC

- Stainless Steel Panel PC
- All-in-one Panel PC
- Compact Panel PC
- Heavy-Duty Panel PC
- Outdoor Panel PC
- ARM-based Panel PC



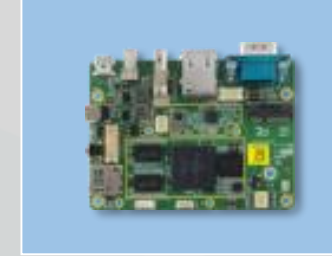
Digital Signage Player

- Entry-Level Player
- Mid-Range Player
- Extreme Performance Player
- Outdoor/In-vehicle Player
- OPS Player
- All-in-one Bar-type Display



Network Appliance

- Rackmount Network Appliance
- Desktop Network Appliance
- Networking Motherboard
- Expansion Module Card



RISC Platform

- RISC-based Panel System
- RISC-based HMI
- RISC-based Signage Player
- RISC-based SBC



Intelligent Transportation

- Railway System
- In-Vehicle System
- Railway Panel PC
- Passenger Information System
- Outdoor Information Panel PC



Adres

: Yenişehir Mah. Millet Cad. Sümbül Sok.
No:10 StarPort Residence Ofis 147 Pendik
İstanbul/ Türkiye

Web

: www.icc.com.tr

Telefon

: +90 (216) 510 66 96

E-mail

: info@icc.com.tr